



Suffolk County Council (20041323)

Babergh and Mid Suffolk District Councils (20041302)

**Local Impact Report Appendix 14: Leavenheath
Neighbourhood Plan**

Bramford to Twinstead (EN020002)

Deadline 1

25 September 2023

14 Leavenheath Neighbourhood Plan

Leavenheath Neighbourhood Plan 2022-2037



Referendum version
July 2023

Contents

	Page
1. Introduction	3
2. Leavenheath parish	7
3. How the Plan was prepared	14
4. Vision and objectives	19
5. Policies and projects	21
5.1 Environment and Landscape	25
• Policy LEAV1: Views of community importance	
• Policy LEAV2: Local Green Spaces	
• Policy LEAV3: Landscape and biodiversity	
• Policy LEAV4: Surface water drainage	
5.2 Development and Design	39
• Policy LEAV5: Location and scale of housing development	
• Policy LEAV6: Pattern of growth	
• Policy LEAV7: Housing size, type and tenure	
• Policy LEAV8: Non-designated Heritage Assets	
• Policy LEAV9: Design principles (including the Leavenheath Design Guidelines and Codes)	
5.3 Access	52
• Policy LEAV10: Walking and cycling	
• Policy LEAV11: Traffic and road safety	
5.4 Community Infrastructure	59
• Policy LEAV12: Recreational space	
• Policy LEAV13: Protection of existing community infrastructure	
• Policy LEAV14: Convenience/small shop	
6. Implementation	68

Appendix

70

- A: Neighbourhood Plan Steering Group members
- B: Leavenheath Character Appraisal
- C: Local Green Space justification
- D: Non-designated Heritage Assets justification
- E: Glossary

2. Leavenheath parish



Figure 1: the Leavenheath parish, designated Neighbourhood Plan area (source: parish online with own annotations). Blue line denotes parish boundary and purple dashed line denotes pylons and power network.

Local Impact Report Extract

Leavenheath Neighbourhood Plan Policy LEAV3: Landscape and biodiversity retains the former Mid Suffolk and Babergh Special Landscape Area as Area of Local Landscape Sensitivity and states that sensitive features typical of the Ancient Rolling Farmlands character area, such as woodland, species rich hedgerows, and associated ditches, should be retained and incorporated into the design and layout of new development proposals. Further, development proposals within the Area of Local Landscape Sensitivity (as defined on figure 18 and the policies map) will only be permitted where they:

- 1.1.a Maintain or enhance the special landscape qualities of the area;
and
- 1.1.b Are designed and sited so as to harmonize with the landscape setting.

LEAV3: Landscape and biodiversity

The scenic value of the landscape within the neighbourhood plan area, and outside of the defined settlement boundaries, will be protected from development that would adversely affect its character and value. Sensitive features typical of the Ancient Rolling Farmlands character area, such as woodland, species rich hedgerows, and associated ditches, should be retained and incorporated into the design and layout of new development proposals.

Development proposals within the Area of Local Landscape Sensitivity (as defined on figure 18 and the policies map) will only be permitted where they:

- Maintain or enhance the special landscape qualities of the area; and
- Are designed and sited so as to harmonize with the landscape setting.

All development proposals should retain existing features of biodiversity value (including trees, hedgerows, grass verges, ponds and drainage ditches).

Development proposals should identify how they will provide a net gain in biodiversity through, for example:

- The creation of new natural habitats.
- The planting of additional native trees and hedgerows, for screening, landscaping and separation purposes.
- Green areas between and on new developments.
- Soft site boundaries to new developments.

The extent of any net gain in biodiversity should be in accordance with national policy.

Where loss or damage is unavoidable, the development shall provide for appropriate replacement planting or appropriate natural features on site together with a method statement for the ongoing care and maintenance of that planting. Where development proposals cause damage to identified natural features, wildlife corridors around the interruption will be constructed.

New and enhanced ecological networks and wildlife corridors will be encouraged.

5.1.18 The Joint Babergh and Mid Suffolk District Council Landscape Guidance (August 2015), identifies Leavenheath as 'Ancient Rolling Farmlands' – a rolling landscape of medium clay soils studded with blocks of ancient woodland. This landscape type encompasses a large area of the Babergh District including to the south the Dedham Vale AONB, River Stour Project, Polstead and Stoke by Nayland, continuing west as far as Little Cornard to the eastern side of Hadleigh and north through Cockfield and beyond the boundary of the district.⁹ Figure 17 shows areas of ancient woodland and Royston Wood.

5.1.19 Part of the parish to the west of High Road is currently identified in the adopted Babergh Local Plan 2006 as a Special Landscape Area (SLA). Its extent is shown in figure 18. Policy CR04 of the 2006 Plan requires that development proposal should only be permitted in such areas where it can be demonstrated that they will maintain or enhance the special landscape qualities of the area and, are designed and sited so as to harmonise with the landscape setting. However, the SLA designation is not set to be continued in the emerging

⁹ Joint Babergh and Mid Suffolk District Council Landscape Guidance (August 2015)
<https://www.babergh.gov.uk/assets/DM-Planning-Uploads/Joint-Landscape-Guidance-Aug-2015.pdf>

Babergh Mid Suffolk Joint Local Plan, which instead relies upon the broader Landscape Guidance document produced in 2015. Given that the landscape remain largely unchanged, this Neighbourhood Plan retains the designation, but renames this as an Area of Local Landscape Sensitivity to ensure consistency with other neighbourhood plans across Babergh District

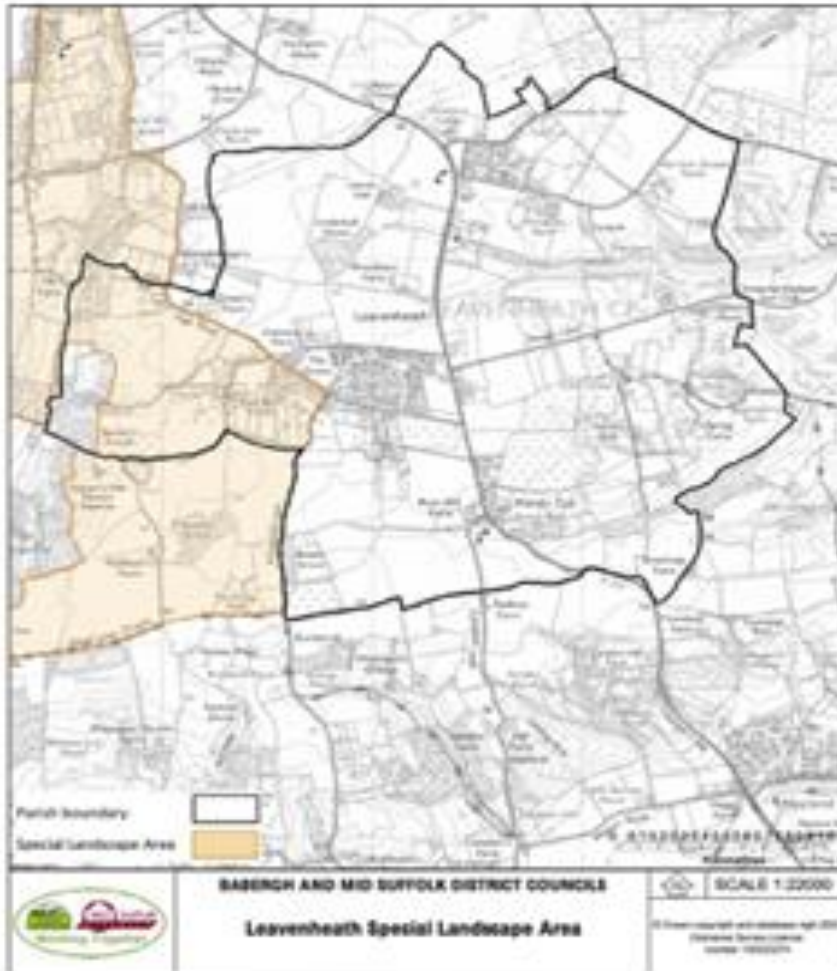


Figure 18: Leavenheath Special Landscape Area. Source: Babergh District Council. Area of Local Landscape Sensitivity within the parish boundary.